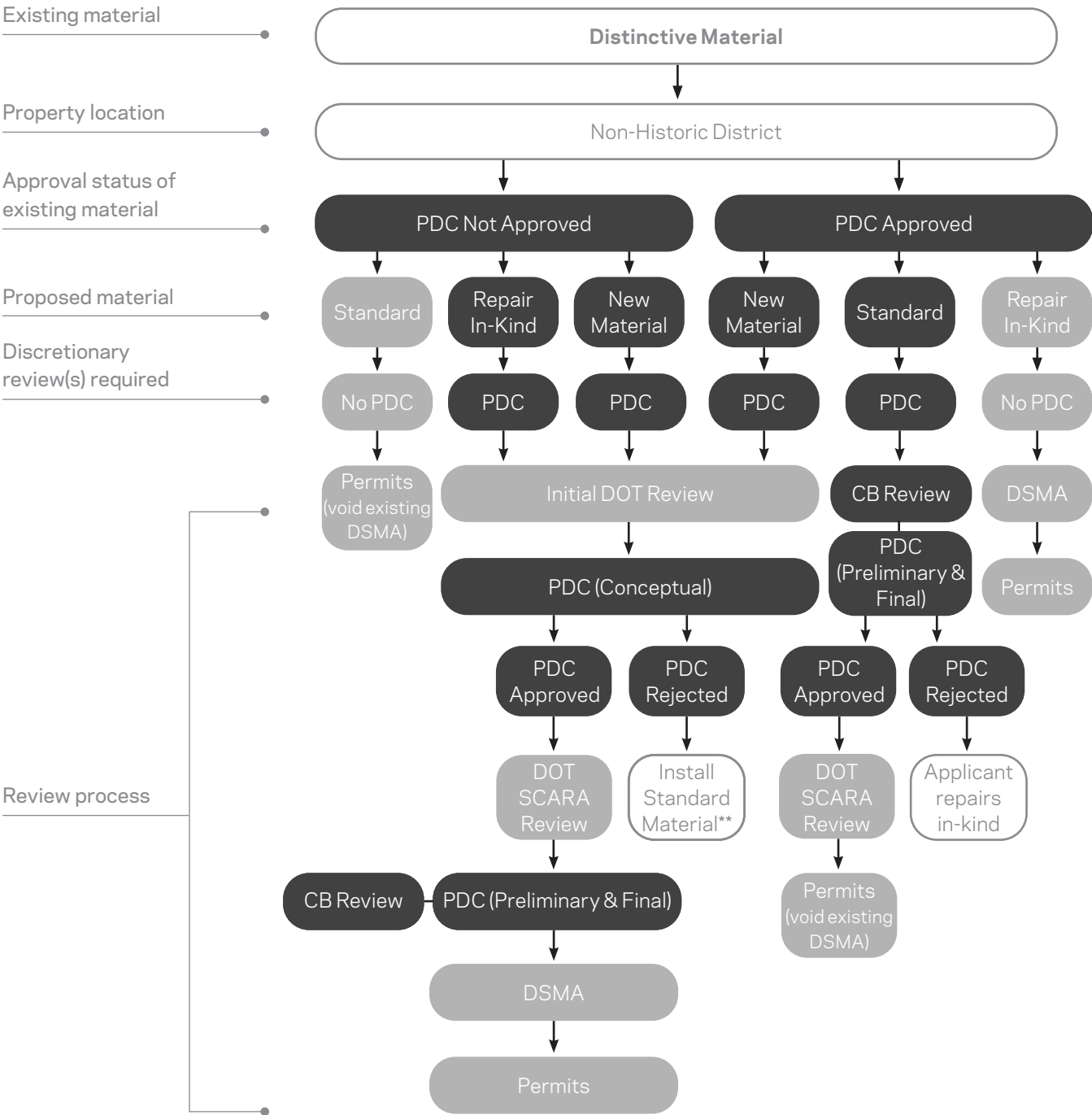
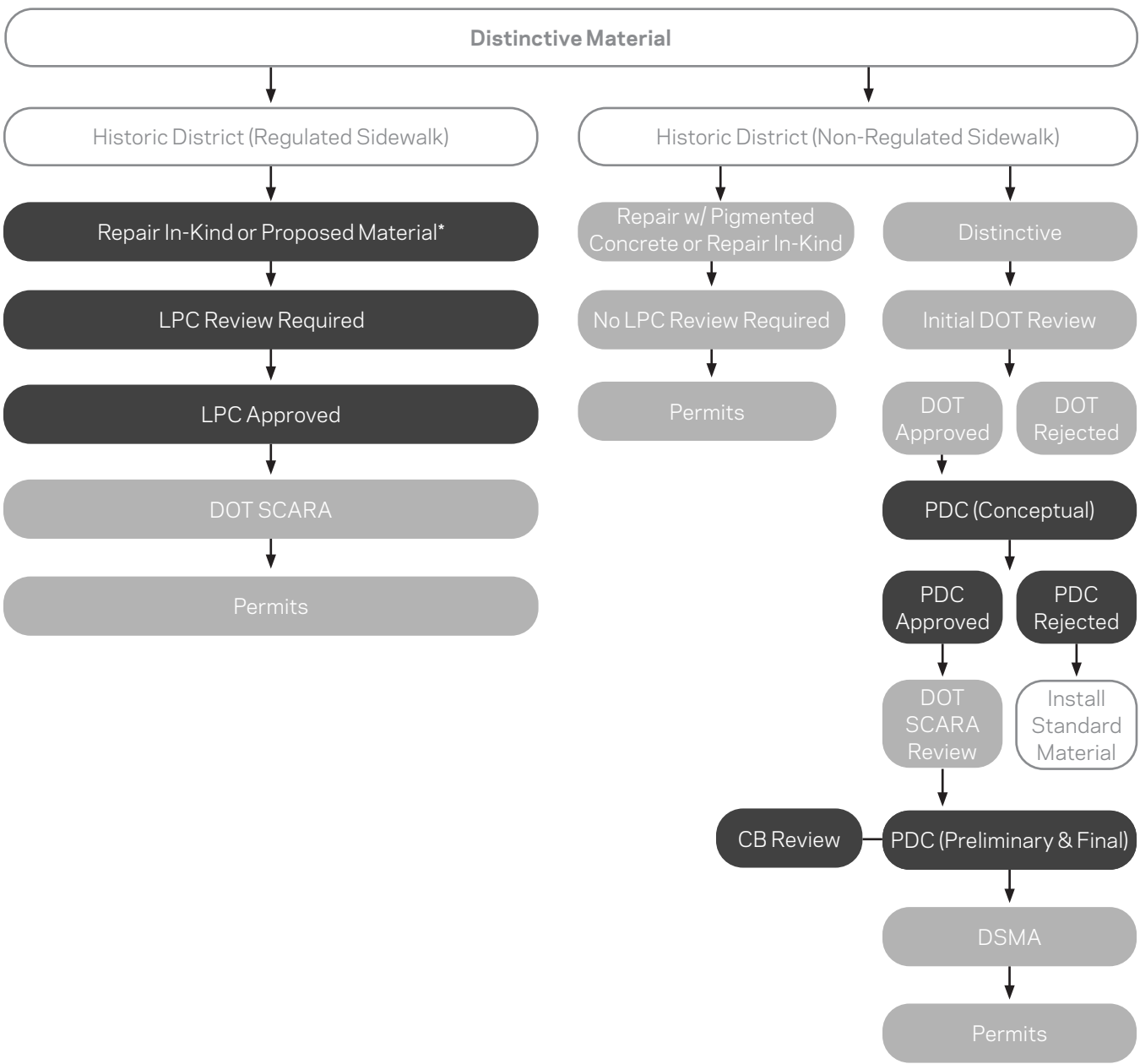


Sidewalk Review Process Diagram: Distictive Sidewalk and Curb Materials



Legend

- DOT Process
- PDC/LPC Process



Acronyms

- DSMA:** Distinctive Sidewalk Maintenance Agreement
- LPC:** Landmarks Preservation Commission
- PDC:** Public Design Commission
- CB:** Community Board
- SCARA:** Sidewalk, Curb, & Roadway Application (www.nyc.gov/html/dot/downloads/pdf/instfilingplan.pdf)

Note: Standard Material refers to **MATERIALS: UNPIGMENTED CONCRETE AND MATERIALS: PIGMENTED CONCRETE**.

Note: Adjacent property owner or jurisdictional organization submits proposals for Distinctive materials to DOT for an initial review. The submission usually comprises architectural drawings, site photographs, project descriptions, and other supporting materials as necessary.

Note: For permits, applicant's contractor must submit for appropriate construction permits from DOT prior to starting any work.

* Pursuant to LPC Rules, certain treatments may be approved at a Staff level. See Landmarks Preservation Commission, Title 63, Section 2-19 SIDEWALKS of the Rules of the City of New York.

** If PDC rejects replacing an approved Distinctive sidewalk with a new Distinctive sidewalk, the applicant must repair the approved Distinctive sidewalk in-kind.